

# DANDENONG PRIMARY SCHOOL NEWSLETTER

**Monday 28 February 2022**

## **National Be Kind Day**

Wednesday is National Be Kind Day and to celebrate, we are inviting students and staff to wear casual clothes and to bring along a 'gold coin' donation to raise money for the [Asylum Seeker Resource Centre](#).

Let's stand up to bullies and spread kindness!

Dandenong Primary School is celebrating  
**NATIONAL BE KIND DAY**  
on Wednesday 2 March 2022



Everyone has the right to be safe & to feel safe.

**Let's stand up to bullies  
& spread kindness.**

Wear casual clothes & please bring along a  
'gold coin' \$\$ donation which will go to  
the Asylum Seeker Resource Centre



## **Art Therapy 2022**

This term we welcome pre-service Art Therapist, Sharlene Stratford, who will be providing Art Therapy to selected students on Tuesdays, Wednesdays and half-day Thursdays.

Art therapy is a specialised area of mental health that uses art materials and the creative process to explore emotions, reduce anxiety,

increase self-esteem, and resolve other psychological conflicts

## **Drama Club Returns**

Our school's association with [St Martins Youth Arts Theatre](#) continues, with up to 20 Year 3 to 6 students participating in weekly after-school drama workshops each Wednesday in our school hall.

## **Dream & Lead Student Leader Conference**

Today our Year 6 student leaders travelled into the city to participate in the Dream & Lead Conference. This conference is designed to inspire, strengthen and empower primary school leaders.

Dream and Lead is a one-day, highly engaging event designed to support primary school students in discovering their leadership potential, whilst providing them with strong foundations to succeed.

Throughout the day, students participated in purposeful activities developing their problem-solving skills, and increasing confidence and independence. Facilitated by internationally-trained young leaders, students will recognise the impact they can create as a young person.

We are excited at the possibilities that this conference offers for our student school leaders this year.

Hopefully our student leaders can report back to us all in the next newsletter.

## **Facebook & Instagram Pages**

If you're on Facebook and/or Instagram, stay up-to-date with our latest news here:



[www.facebook.com/dandenongprimaryschool](http://www.facebook.com/dandenongprimaryschool)  
[www.instagram.com/dandenongps](http://www.instagram.com/dandenongps)

# BULLYING NO WAY!

## If your child talks to you about bullying:

1. **Listen** calmly and get the full story.
2. **Reassure** your child that they are not to blame.
3. **Ask** your child what they want to do about it and how you can help.
4. **Visit** [www.bullyingnoway.gov.au](http://www.bullyingnoway.gov.au) to find some strategies.
5. **Contact** the school.
6. **Check in** regularly with your child.

## Outside School Hours Care (OSHC) Service Onsite at Dandenong Primary School

Our school has been successful in applying for a 3-year, \$75,000 per annum OSHC Establishment Grant which will see the commencement of before and after school care and school holiday programs onsite at Dandenong Primary School in 2022.

The OSHC Establishment Grant initiative provides grant funding to Victorian government schools delivering primary aged education without an existing OSHC program. The initiative aims to improve the availability of OSHC services across Victoria, ensuring that all children and families are able to access programs on their school site or in their local area.

The school and school council will be working to decide on a service provider over the coming weeks. It is likely that the successful provider will begin sometime in Term 2.



## Student Wellbeing

This year we have a significant focus on the implementation of Play is the Way and Zones of Regulation approaches as part of our Social Emotional Learning (SEL) across the school.

Social and emotional learning (SEL) can help students learn the competencies and skills they need to build resilience and effectively manage their emotions, behaviour and relationships with others.



[Play is the Way](#) uses physically interactive games and activities, an empowering self-reflective language and six key virtues to support social and emotional learning.

The Zones of Regulation is a systematic, cognitive-behavioural approach used to teach us how to regulate our feelings, energy and sensory needs.



## Semper Dental Visit from Thursday

Semper Dental will be onsite Thursday this week through until Tuesday of next week for student dental appointments.



## Friendship Club is Back!

Friendship Club is back for 2022. This year our Community Hub student leaders are Indi and Millie and they will be working together to facilitate the weekly Friendship Club sessions.

The Friendship Club is held in our Community Hub room (next to the art room) and is a good opportunity for students to leave behind the hustle and bustle of the playground for one lunchtime per week to engage in different activities such as board games and arts and crafts.

DANDENONG PRIMARY SCHOOL'S COMMUNITY HUB  
**FRIENDSHIP CLUB**  
Come and join us in the hub!



EVERY TUESDAY LUNCHTIME IN THE  
DANDENONG PRIMARY SCHOOL  
COMMUNITY HUB

TO SIGN UP SEE OUR HUB LEADERS  
INDI OR MILLIE IN 5/6D



174 - 182 Foster Street  
Dandenong VIC 3175  
Tel. 03 9792 2743  
www.dandenongps.vic.edu.au

## SunSmart Hats

SunSmart hats are compulsory from September through April each year.

**One of these things is not like the others**



**CAPS DON'T KEEP THE SUN OFF!**



Broad brimmed, legionnaire and bucket hats protect the neck, ears, temples and sides of the face—offering very good sun protection to these vulnerable areas which are common sites for skin cancer. Baseball caps and visors do not provide adequate protection.

SunSmart hats include:

- Bucket hats
- Broad-brim hats
- Legionnaire hats

Baseball hats do not provide enough protection of the ears and neck and are therefore not permitted.

## International Women's Day

Tuesday 8 March 2022 (next week) is International Women's Day.

*Imagine a gender equal world.*

*A world free of bias, stereotypes, and discrimination.*

*A world that is diverse, equitable, and inclusive.*

*A world where difference is valued and celebrated.*

*Together we can forge women's equality.*

*Collectively we can all #BreakTheBias.*

Happy International Women's Day!

For more, visit:

<https://www.internationalwomensday.com/>







**COVIDSafe Extension**

Families are encouraged to test each child before school on the following dates:

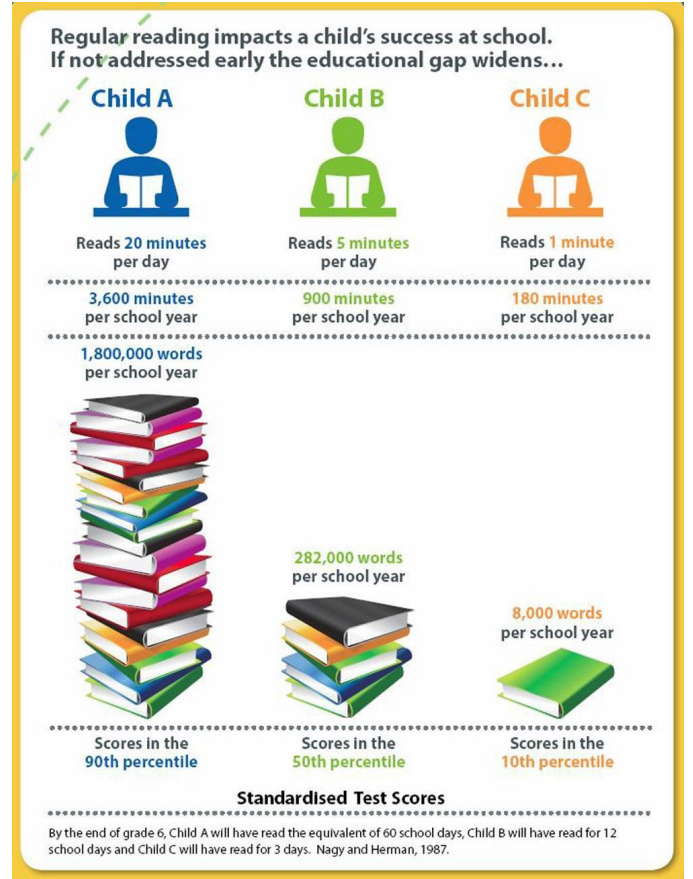
- 

If your child returns a positive result, please:

1. Inform the school, and
2. Ensure your child isolates at home for 7-days.

**Friday Lunchtime Icy Poles \$1**

Icy poles are back on sale for \$1 every Friday lunchtime starting this week. Money raised from the sales goes towards our Year 6 Graduation.



**Bush Kinder Returns**

We're very pleased to announce that our FREE 'Step Into Bush Kinder' program for 3-year olds (and thereabouts) will finally resume this week. Bush Kinder will take place EVERY Thursday from 9 - 11am onsite at Dandenong Primary School.

Please note that adults will need to:

- ✓ Provide proof of full vaccination
- ✓ Carry a mask for if the session moves indoors (masks are not required outdoors)

Come along every Thursday from 9am. Meet outside our Community Hub.



## Foundation (Prep) Bear Hunt

Last week, our Foundation (Prep) students went on a "bear hunt".

Students had been reading "We're Going on a Bear Hunt" by Michael Rosen and really got into the story through role play.



## Playground Piano

We have just installed a recycled playground piano.

Parents and guests, we would love you to have a play before and after school! Our students will get to play at recess and lunch times.

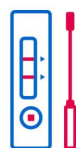


## Important Reminders from Dandenong Primary School

### Everyday:



### Mondays & Wednesdays before school:



Negative = come to school

Positive = stay home for 7 days



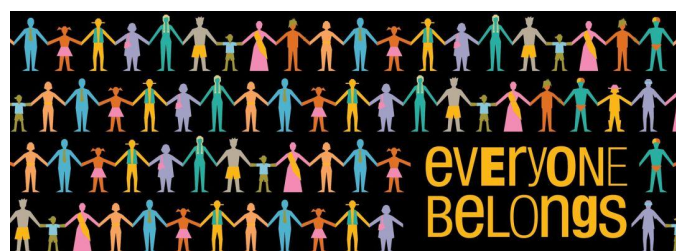
## Monday & Wednesday COVID-19 RATs

The Department of Education & Training (DET) supply of rapid antigen testing (RAT) kits and mask requirements for Year 3 to 6 students and all staff is continuing for the remainder of Term 1.

This means that students will continue to need:

- ✓ An approved face mask (compulsory for Year 3 to 6)
- ✓ A refillable drink bottle
- ✓ An approved 'SunSmart' hat (something that protects the face, ears AND neck)

Another supply of RAT kits will be sent home with each student early this week and we expect to be sending more home as the term continues to progress.





Text Alison on 0402 599 358 for more information

Don't forget your hat and some fruit!



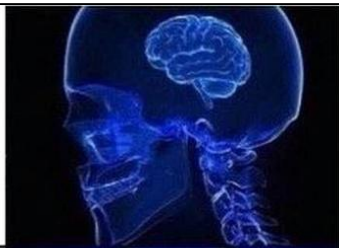
We're going on a bug hunt...

Join us on  
**Thursdays**  
9am – 11am  
**STEP INTO  
BUSH KINDER**

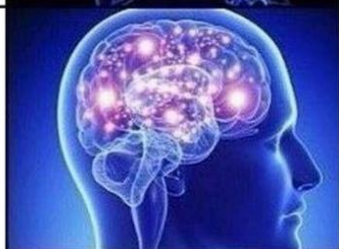
Meet @  
Community Hub



Frequently arriving late and/or missing more than 6 days per term



Missing between 4 and 6 days per term



Arriving on time everyday & not missing more than 3 days per term



**IT DOESN'T HAVE TO BE 15 MINUTES IN A ROW.**

You don't have to finish the book.

You don't have to read all the words.

Talk about the pictures instead.

Exclaim as you turn the pages.

Just engage, do it every day, and for at least **15 minutes.**







# KEEPING SAFE & OPEN AT DANDENONG PRIMARY SCHOOL

## MEASURES TO LIMIT VIRUS TRANSMISSION:



Face masks compulsory when indoors for students in Year 3 to 6 and all staff (exemptions apply in limited circumstances)



Free twice-weekly voluntary testing at home



Physical distancing & limits to indoor cohort mixing apply (e.g. staff and students to maintain year level 'bubbles')



Air purifiers, open windows & doors, outdoor learning (where practicable)



No entry to classrooms for parents & carers for the time being (exceptions apply). Students and staff must stay home if unwell

## RESPONDING TO CONFIRMED CASES:



If a student tests positive, parents & carers must notify the school as soon as possible

Students who report a positive result must isolate for 7-days and must not attend school during that 7-day period.



Where a student is a household contact of a positive case (that is, they have spent more than 4 hours with someone who has COVID-19 inside a house) they must inform the school and isolate for 7-days and not attend school during that 7-day period



The school will keep students, families and staff up-to-date with any relevant information when a student or staff member that had attended school has returned a positive COVID-19 test result

# Important Dates for 2022

## January

- Curriculum Day 28/1 (Induction)
- Curriculum Day 31/1 (First Aid Training)

## February

- ~~Term 1 Starts 9am Tuesday 1/2~~
- Lunar New Year - Year of the Tiger 1/2
- Mother Language Day Sunday 21/2
- Updated **Asthma & Anaphylaxis Plans Due 28/2**
- ~~Enrolment Census 28/2~~

## March

- [Pancake Day/Shrove Tuesday](#) 1/3
- International Women's Day Tuesday 8/3
- [Labour Day](#) Monday 14/3 - **School Closed**
- [National Day of Action Against Bullying](#) 19/3
- Welcome to Country Ceremony - TBC
- [Harmony Day](#) Monday 21/3
- Meet & Greet - To be confirmed

## April

- [Ramadan](#) Begins Evening 1/4
- [Autism Awareness Day](#) Saturday 2/4
- **Term 1 Ends 2:30pm Friday 8/4**
- [Good Friday](#) 15/4
- [Easter Sunday](#) 17/4
- Orthodox Easter Sunday 24/4
- [ANZAC Day](#) Sunday 25/4
- **Term 2 Begins Tuesday 26/4**
- [Mother Earth Day](#) Friday 22/4
- [Ramadan](#) Ends Evening 30/4

## May

- Mum & Me Friday 6/5
- Mother's Day Sunday 8/5
- [NAPLAN](#) 10-20/5
- [International Day of Families](#) Sunday 15/5
- Education Week
- Year 5 [Malmsbury Camp](#) 25-27/5
- [Australia's Biggest Morning Tea](#) 26/5
- [National Reconciliation Week](#) 27/5 - 3/6

## June

- Queen's Birthday Holiday 13/6 - **School Closed**
- [Refugee Week](#) 19-25/6
- World Refugee Day 20/6
- Semester 1 Reports Published 20/6
- Learning Conferences 22/6
- [CSEF](#) applications close (TBC)
- **Term 2 Ends 2:30pm Friday 24/6**

## July

- [Eid al-Adha](#) Begins Evening 9/7
- **Term 3 Begins Monday 11/7**
- [Eid al-Adha](#) Ends Evening 13/7
- [Schools Tree Day](#) Friday 29/7
- [International Day of Friendship](#) 30/7
- [Schools Tree Day](#) Friday 31/7

## August

- [National Science Week](#) 13-21/8
- [CBCA Book Week](#) 20-26/8
- [Daffodil Day](#)
- Teacher Aide Appreciation Week 30/8 - 3/9

## September

- Indigenous Literacy Day
- Father's Day Sunday 4/9
- International Literacy Day 8/9
- R U OK Day 8/9
- Year 6 [City Camp](#) 12-14/9
- **Term 3 Ends 2:30pm Friday 16/9**

## October

- **Term 4 Begins Monday 3/10**
- Swimming Program Begins (TBC)
- World Mental Health Day 10/10
- Dad & Family Night Thursday 13/10
- Diwali Thursday 24/10
- Walk Safely to School Day (TBC)
- [Birth of the Báb](#) 25-26/10
- Prep 2022 Enrolments Due 28/10
- Teachers Day Friday 28/10
- Halloween 31/10

## November

- Melbourne Cup Tuesday 1/11 - **School Closed**
- Coach Approach 3/11 (TBC)
- [Remembrance Day](#) 11/11

## December

- Community Picnic 5/12
- Year 6 Graduation 15/12
- Semester 2 Reports 16/12
- **School Year Ends 1:30pm Tuesday 20/12**

*This list was updated 28 February 2022 with changes to the dates of the Year 5 & Year 6 camps.*

*If you have an important community date to add to our calendar, please do not hesitate to get in touch with your suggestion.*